



Bulletin

O- Festival Imst, Tyrol 2018 5th – 8th July 2018

<https://o-festival.orienteeing-imst.at/>

o-festival@orienteeing-imst.at

Organizers:

Orienteeing Innsbruck Imst (former Laufklub Kompass)

Arzler Straße 48a

6020 Innsbruck

DI Hans Georg Gratzner

phone: +43 664 5436001

<https://o-festival.orienteeing-imst.at>

mail: o-festival@orienteeing-imst.at



General Information

Open hours of competition office:

In order to make the access to the event center easier for you, we move the event center directly to the individual stages 2 and stage 3.

Opening day & Stage 1: Thursday 5th July 2018:

Event Center Alte Volksschule,
Schulgasse 1, 6460 Imst

Open from 14:00 to 16:45

After that, the Event Center is right in the arena of stage 1

Oberer Sprakassenplatz, 6460 Imst

Open from 17:15 to 20:00

Stage 2: Friday 6th July 2018

Obtarrenz Lenzenanger, 6464 Tarrenz

Open from 14:00 to 19:00

Stage 3: Saturday 7th July 2018

Event Center is right at the arena of stage 3

Hotel Linserhof, Teilwiesen 1, 6460 Imst

Open from 8:00 to 14:00

Competition office and finish areas coordinates:

- Event Center Alte Volksschule 47° 14' 39.473" N ; 10° 44' 19.936" E
- Stage 1: 47° 14' 22.823" N 10° 44' 20.836" E
- Stage 2: 47° 16' 35.065" N ; 10° 45' 40.997" E
- Stage 3: 47° 16' 14.167" N 10° 44' 17.102" E

Event type: 3 days event. Results of 3 days sum up for the final.

Distance Parking- Finish area: All Stages 0-300 m, parking fees at stage 1 and stage 2

First Start: **Open Start windows at each stage.**

Stage 1: 18:00 to 19:00

Stage 2: 16:00 to 17:00

Stage 3: 10:00 to 11:00

Maps scales:

Stage 1 1: 5000, E= 2,5m

Stage 2 1: 10000, E= 5m

Stage 3 1:10 000 for Easy, Intermediate; 1: 12 500 for Challenging, E=5m

Map protection: maps will be printed on Pretex synthetic paper, which is water resistant.

Control descriptions: Control descriptions will be available at the start. Each runner is responsible himself/herself taking the right control description and the right map.

Taking maps and giving them back: at the start each competitor takes the map at his own responsibility. Therefore, before you start to run, check the map title to make sure that the one with correct course was taken. Runners will not be asked for their maps after finishing race. Therefore, you are kindly asked for **fair play**- do not show your map to the runners who haven't started yet! Otherwise you risk disqualification.

SI Cards: Sportident touch free

SI chips can be rented for the price of € 2,00 per stage, deposit € 20,00

Finishing times: Stage 1: 20:00, Stage 2: 19:00, Stage 3: 13:00

Prize giving: after 3rd stage, as soon as first 3 in all classes are clear, small symbolic prizes will be awarded. Normally that would be around 12:00.

Pictures: Pictures taken at all stages can be looked at on:

<https://o-festival.orienteering-imst.at>. The pictures taken during the event are used for press work and social media.

Results: The results will be printed on result lists during the competition.

Splittimes and overall results can be found on the website

<https://o-festival.orienteering-imst.at>

Tents: clubs can pitch a tent at Stage 2 and Stage 3, it's not allowed to leave them pitched overnight. It's not allowed to pitch any tents at stage 1.

Insurance and medical assistance:

Each competitor takes part solely on his/her own responsibility. Competitors are not insured by organizer. Organizer takes no responsibility for any injuries or health issues that might happen or occur among the participants before, during or after the o-festival. In case of emergency please call 144.

Water: drinking will be available in Finish area. Fresh water can be drunk from all the wells.

“Wild Camping “: it is forbidden to camp outside of public campsites

Stage 1- City Sprint in Imst

Venue: Imst, Oberer Stadtplatz

Oberer Sparkassenplatz, 6460 Imst,

Coordinates: 47° 14' 22.823" N 10° 44' 20.836" E

During the Competition the Event Center is right at the Competition Center.

Open from 16:45 to 20:00.

How to get there: the upper Sparkassenplatz is right in the center of Imst. Parking lots are available directly at the competition center.

Terrain: Imst is known as “Stadt der Brunnen”, which means “town of fountains” in English. The town has two parts, the upper town and the lower town. Historical alleys, paths, stairs and bridges are a challenge to runners. The historical part of Imst offers some altitude differences and an appealing ambience in the start- and finish area. Altitude: 750 – 850 m.

Map: Imst Innenstadt

Distance to Start: 500m

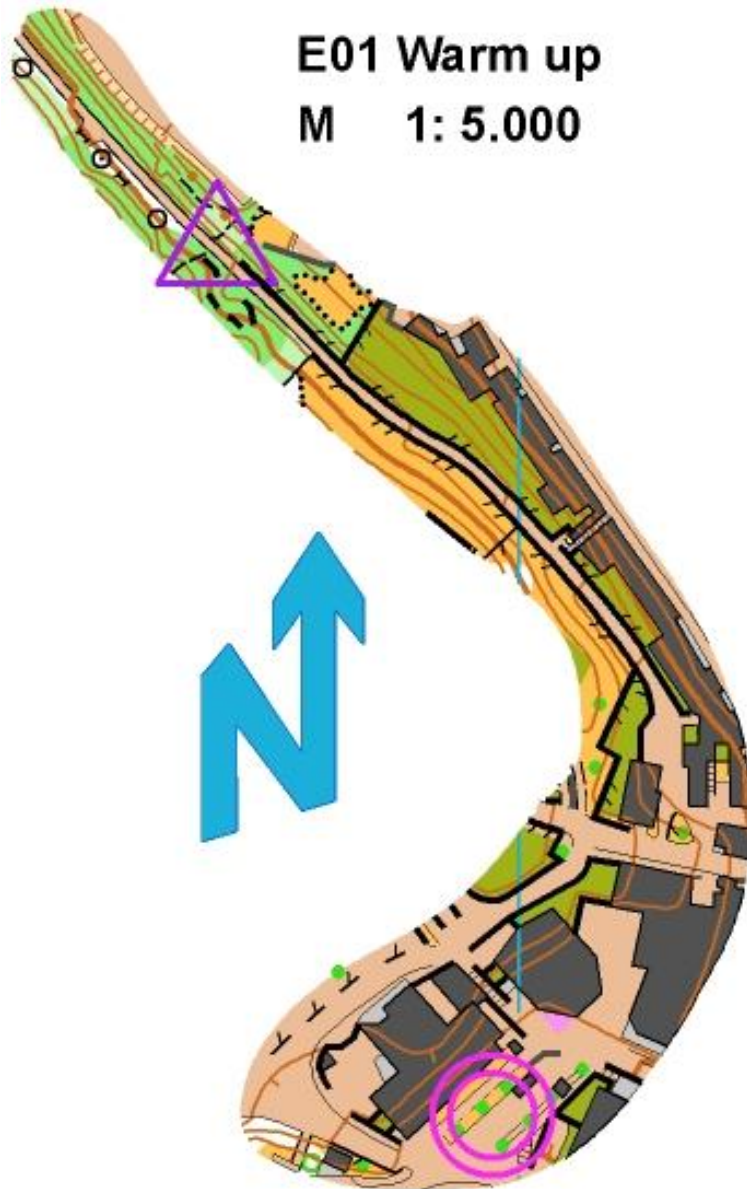
Start Window: 18:00 to 19:00



Course Information Stage 1

E01 - Sprint	Length(km)	Climb (m)	Controls
Easy	1,7	50	12
I-mediate S	2,9	60	11
Intermediate	3,9	90	15
Challenging	4,5	90	16

Special Notes for Stage 1: During the event keep to general traffic rules. Warm up and way to start only at pictured restricted area.



Stage 2 – Middle Obtarrenz

Venue:

Obtarrenz Lenzenanger, 6464 Tarrenz

The event center is right at the competition center, open from 14:00 to 19:00.

Coordinates: 47° 16' 35.065" N ; 10° 45' 40.997" E

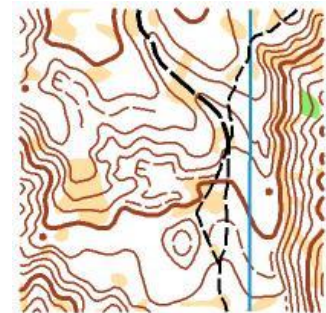
How to get there:

Obtarrenz is located in the north of Tarrenz on a high plateau. From Imst heading direction Fernpass, in Tarrenz turn left to Obtarrenz. Follow the signs "Obtarrenz".

Terrain:

Obtarrenz offers smooth summits and gentle formed terrain in a closed forest area. The competition will be around the arena "Lenzenanger", which has a good infrastructure. On the edge of the steep slopes leading to Tarrenz, very fast running is possible. Altitude: 900 – 1150 m.

Map: Obtarrenz Lenzenanger, 1: 10.000, E= 5m



Distance to start: 700m

Start Window: 16:00 to 17:00

Course Information:

E02 - Middle	Length(km)	Climb (m)	Controls
Easy	1,8	65	7
I-mediate S	2,9	100	11
Challenging	4,2	150	13
Intermediate	3,6	125	11

Special notes for stage 2: Warm up and way to start only at pictured restricted area



Stage 3 – Longdistance Teilwiesen

Venue:

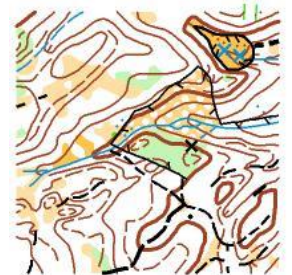
Hotel Linserhof, Teilwiesen 1, 6460 Imst

The event center is right at the competition center, open from 8:00 to 14:00.

Coordinates: 47° 16' 14.167" N 10° 44' 17.102" E

How to get there: These meadows are in the north of Imst on a beautiful plateau. From Imst, follow the signs for Hahntennjoch. The competition center is located on the left directly at the Hotel Linserhof.

Terrain: The final stage of the event will take place at the high plateau "Teilwiesen" above Imst. The hillside with many terrain features requires exact orienteering and the use of the compass. The competition will take place around the so called "Teilwiesen" meadows, where the finish arena is located. Altitude: 1000 – 1200 m



Map: Imst Teilwiesen, 1:10 000 for Easy, Intermediate; 1: 12 500 for Challenging, E=5m

Distance to start: 1200m

Start Window: 10:00 to 11:00

Course Information:

E03 - Long	Length(km)	Climb (m)	Controls
Easy	2,1	70	9
Intermediate	4,7	175	13
I-mediate S	4,3	140	13
Challenging	7,9	325	22

Special Notes for Stage 3: Warm up only and way to start at pictured restricted area. On your course there might be grazing cows every once in a while

